

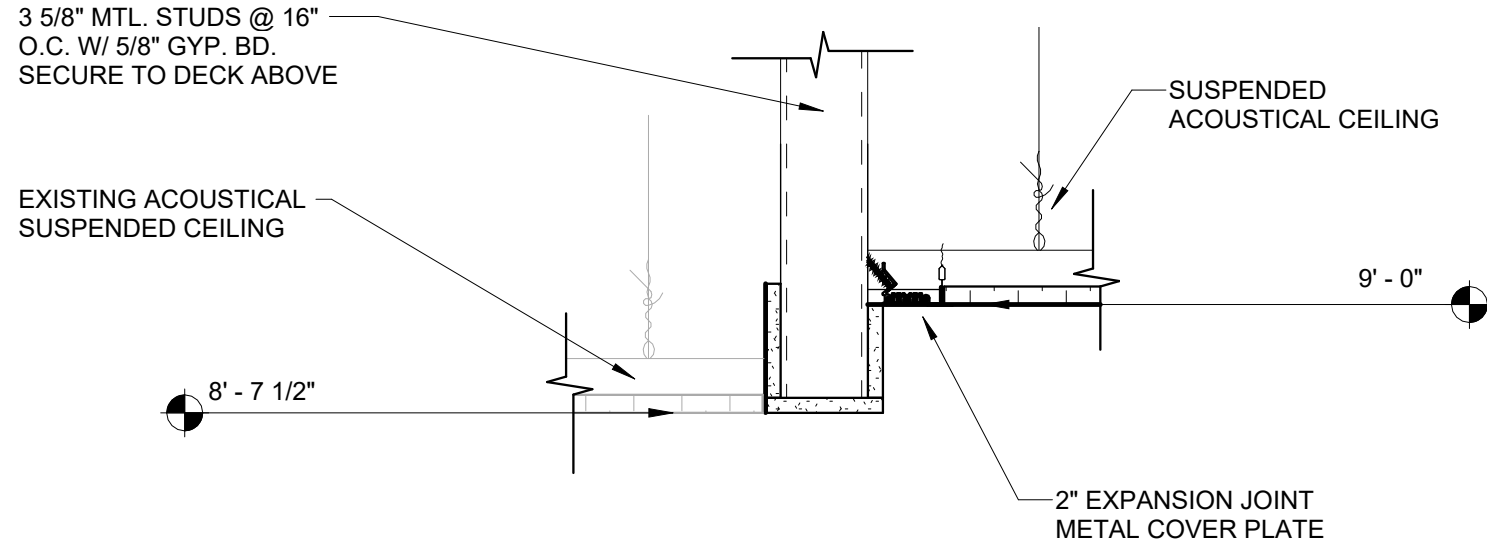
COLOR CODE CHART

1. ALL EXPOSED CONDUIT, PIPING, AND RELATED ACCESSORIES SHALL BE PAINTED TO MATCH THE COLOR DESIGNATIONS INDICATED IN THE LEGEND FOR SYSTEM IDENTIFICATION. COLOR CODING SHALL BE CONTINUOUS AND CLEARLY VISIBLE THROUGHOUT ALL ACCESSIBLE AREAS. WHERE FACTORY COLOR IS NOT PROVIDED, THE CONTRACTOR SHALL FIELD-APPLY PAINT IN ACCORDANCE WITH THE LEGEND. STICKER FOR EAHQ DIFFERENT TYPE OF SYSTEM SHALL BE PROVIDED ON THE VISIBLE PIPES AS WELL
1. FIRE ALARM = **MAROON**
2. POWER = **RED**
3. DATA / WIFI = **ORANGE**
4. HOT WATER = **RED**
5. COLD WATER = **BLUE**
6. REFRIGERANT PIPING = **SILVER OR WHITE**
7. STORM = **GREEN**
8. WASTE = **BROWN**
9. VENT = **GRAY OR CLEARLY LABELED**
10. GAS PIPING = **YELLOW**

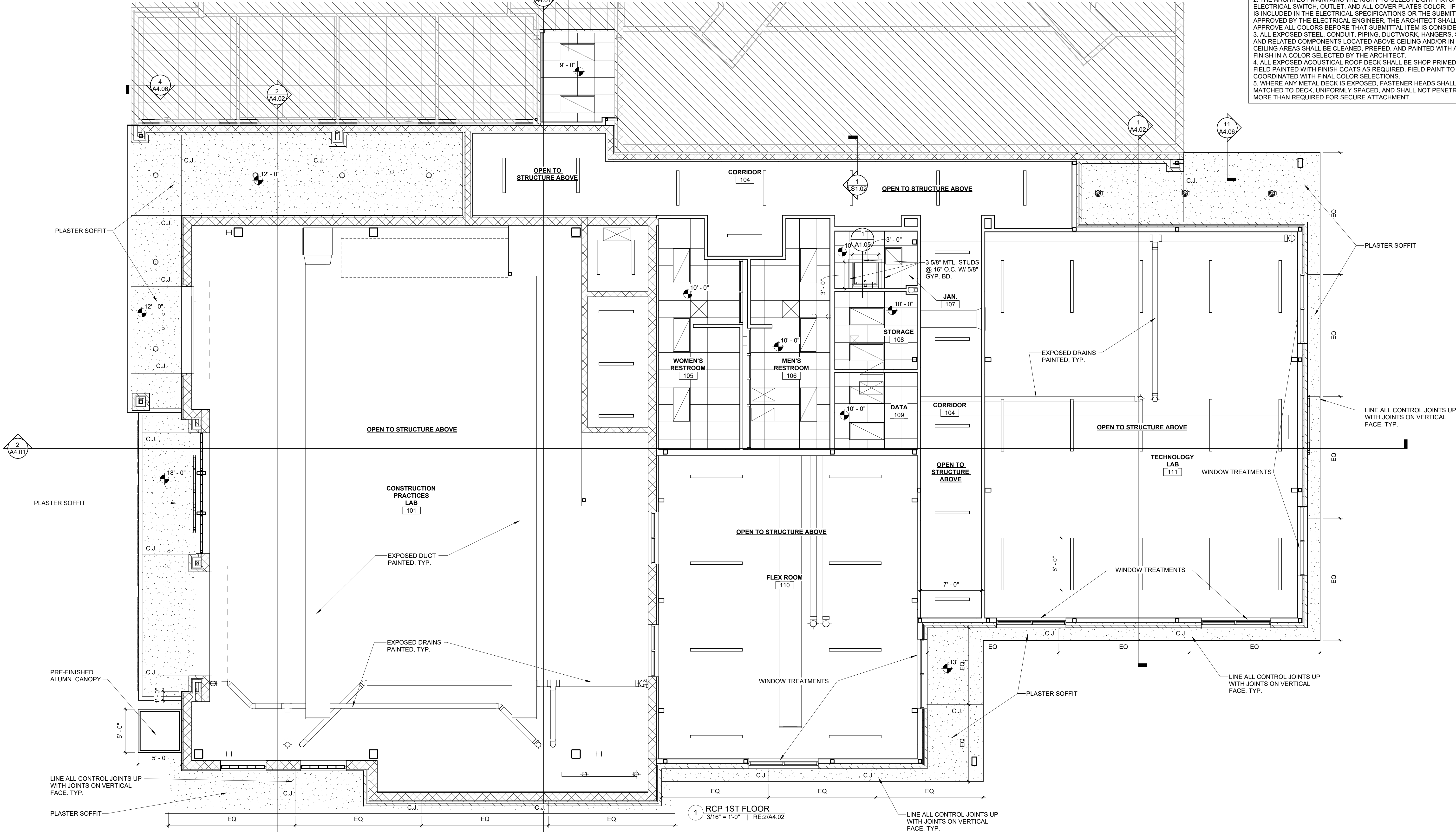
CEILING MATERIAL LEGEND

- 2'-0" x 2'-0" CEILING TILES AND SUSPENDED METAL GRID **ACT 1**
- 2' X 2' MOISTURE RESISTANT ACOUSTICAL CEILING TILE - SEE SPECIFICATIONS **ACT 2**
- X'-X" CEILING HEIGHT

1. THE REFLECTED CEILING PLAN DRAWING INDICATES CEILING FINISHES AND HEIGHTS. SEE ELECTRICAL DRAWINGS FOR ALL LIGHTING AND CEILING MOUNTED DEVICES WHICH SHALL BE COUNTED AND INSTALLED PER THE ELECTRICAL DRAWINGS. ALL SUSPENDED ACOUSTIC CEILINGS IN CORRIDORS SHALL HAVE HOLD DOWN CLIPS. SEE THE FINISH SCHEDULE FOR MORE INFORMATION ON THE SPECIFIC TYPE OF CEILING TILES AND FINISHES FOR EACH INDIVIDUAL ROOM.
2. THE ARCHITECT MAINTAINS THE RIGHT TO SELECT LIGHT FIXTURE, ELECTRICAL SWITCH, OUTLET, AND ALL COVER PLATES COLOR. IF THE COLOR IS INCLUDED IN THE ELECTRICAL SPECIFICATIONS OR THE SUBMITTAL, AND APPROVED BY THE ELECTRICAL ENGINEER, THE ARCHITECT SHALL STILL APPROVE ALL COLORS BEFORE THAT SUBMITTAL ITEM IS CONSIDERED OFFICIAL.
3. ALL EXPOSED STEEL, CONDUIT, PIPING, DUCTWORK, HANGERS, SUPPORTS, AND RELATED COMPONENTS LOCATED ABOVE CEILING AND/OR IN EXPOSED CEILING AREAS SHALL BE CLEANED, PREPED, AND PAINTED WITH A UNIFORM FINISH IN A COLOR SELECTED BY THE ARCHITECT.
4. ALL EXPOSED ACOUSTICAL ROOF DECK SHALL BE SHOP PRIMED WHITE AND FIELD PAINTED WITH FINISH COATS AS REQUIRED. FIELD PAINT TO BE COORDINATED WITH FINAL COLOR SELECTIONS.
5. WHERE ANY METAL DECK IS EXPOSED, FASTENER HEADS SHALL BE COLOR-MATCHED TO DECK, UNIFORMLY SPACED, AND SHALL NOT PENETRATE DECK MORE THAN REQUIRED FOR SECURE ATTACHMENT.

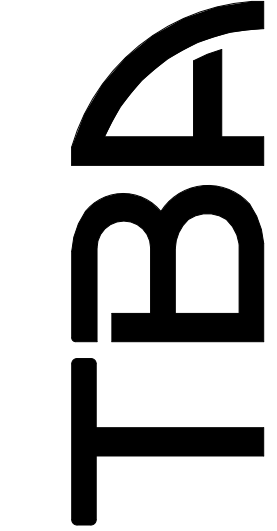


2 ENLARGED DETAIL
1 1/2" = 1'-0" | RE:1/A4.01



1 RCP 1ST FLOOR
3/16" = 1'-0" | RE:2/A4.02

TBA STUDIO
ARCHITECTURE
103 Cypress Street
West Monroe, LA 71291
Tel. 318.340.1550
Fax. 318.998.1315
www.tbastudio.com



SCHOOL OF CONSTRUCTION PRACTICE
LAB BUILDING, UNIVERSITY OF
LOUISIANA MONROE
507 Filhiol Ave, Monroe, LA 71203

DRAWING REVISIONS

No.	Description	Date

DRAWN BY: KB, MU
CHECKED BY: CW
SHEET

A6.01

Date: NOV 2025
Project No.: 24-0059
File Name:

DESCRIPTION:
REFLECTED CEILING PLAN